



The Ultimate Anomaly Collection

- **The anomalies posted at this site are derived from the Google Earth satellite imagery program. [DOWNLOAD GOOGLE EARTH HERE](#)**
- **This site contains postings and satellite images from The Ultimate Anomaly Collection of over 5,000 Google Earth placemarks that consist of anomalous earthworks, unusual topography, geographical anomalies, geological anomalies, scientific anomalies, mound sites, extraordinary sites, weird sites, unexplained features, mysterious landscape signs, unusual underwater formations, and strange places seen with Google Earth.**

Archives

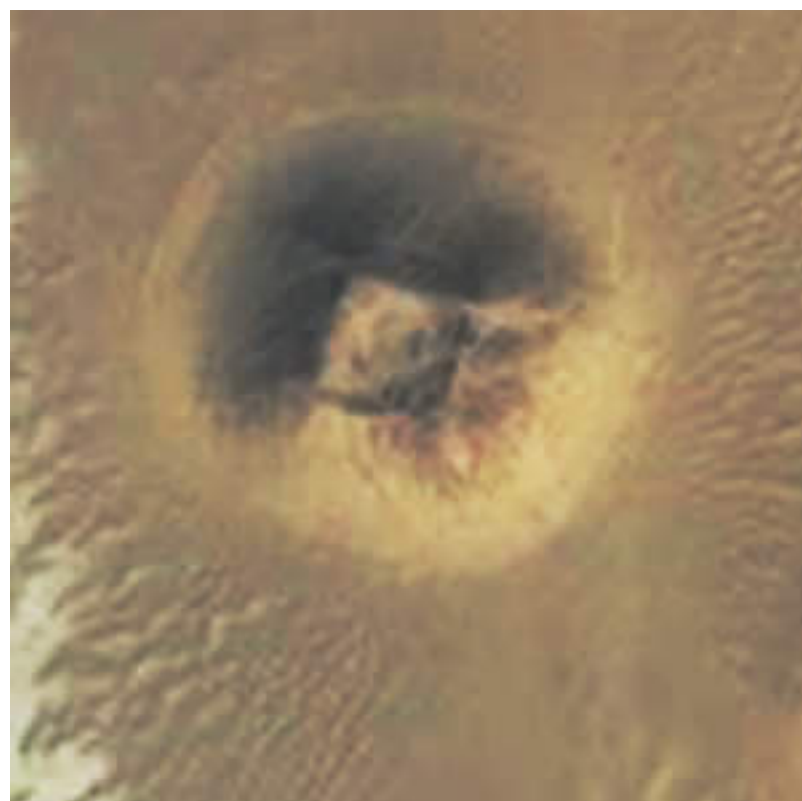
- [Circular Features \(8\)](#)
- [Linear Features \(7\)](#)
- [Mima Mounds \(4\)](#)
- [News \(1\)](#)
- [Sites \(1\)](#)
- [Topographic \(4\)](#)
- [Unexplained Features \(2\)](#)

News

[Current Articles](#) [Categories](#) [Search](#) [Syndication](#)

[Possible Egyptian Pyramids Found Using Google Earth](#)

Two unidentified, possible pyramid complexes have been located with satellite imagery from Google Earth.

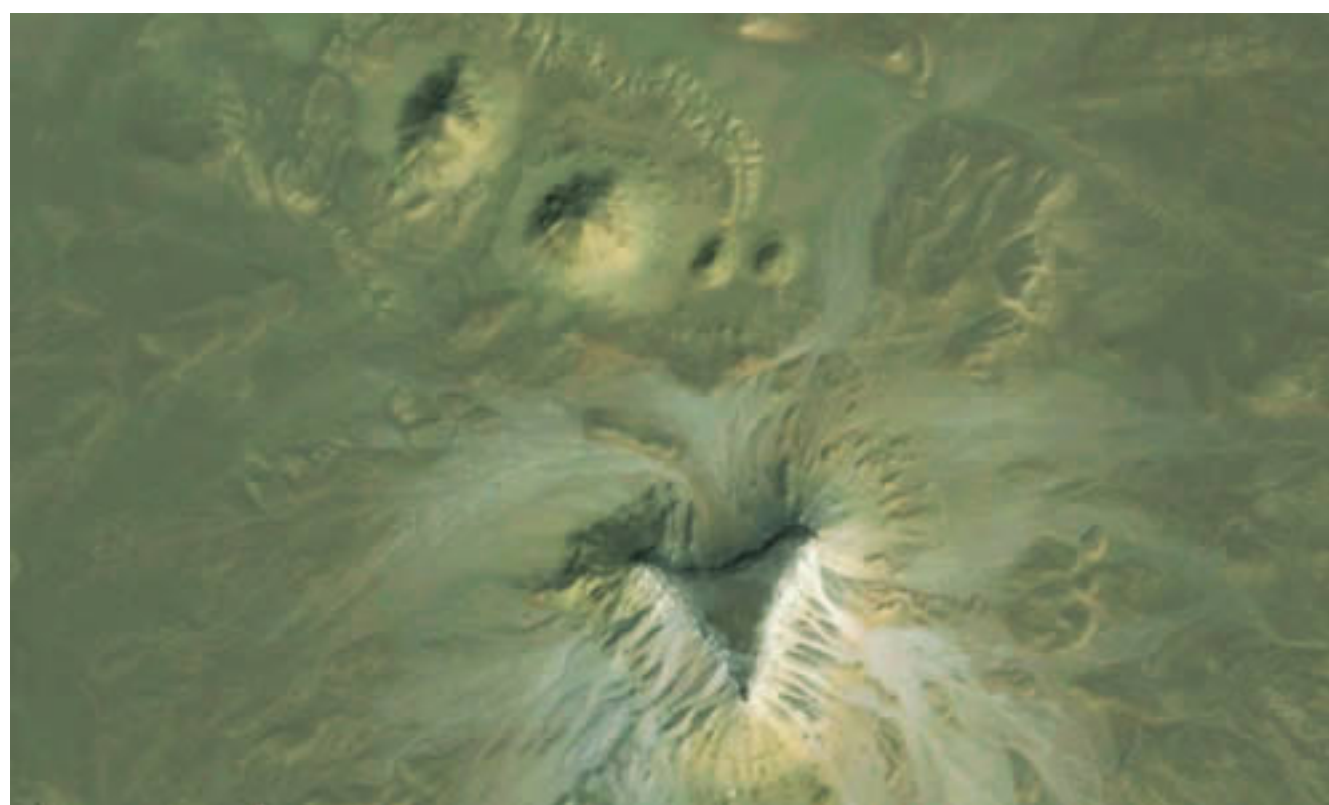


One of the complex sites contains a distinct, four-sided, truncated, pyramidal shape that is approximately 140 feet in width.

This site contains three smaller mounds in a very clear formation, similar to the diagonal alignment of the Giza Plateau pyramids.



Second Site:



The second possible site contains four mounds with a larger, triangular-shaped plateau. The two larger mounds at this site are approximately 250 feet in width, with two smaller mounds approximately 100 feet in width. This site complex is arranged in a very clear formation with the large plateau, or butte, nearby in a triangular shape with a width of approximately 600 feet.

The sites have been documented and discovered by satellite archaeology researcher Angela Micol of Maiden, North Carolina. Angela has been conducting satellite archaeology research for over ten years, searching for ancient sites from space using satellite imagery. Angela is a UNC Charlotte alumni and has studied archaeology since childhood. Google Earth has allowed her to document many possible archaeological sites, including a potential underwater city off the coast of the Yucatan peninsula that has sparked the interest of scientists, researchers and archaeologists. Angela has been assisted by Don J. Long and Bill Donato.

The sites have been verified as undiscovered by Egyptologist and pyramid expert Dr. Nabil Swelim. Nabil's discoveries include the pyramid called Sinki at Abydos and the Dry Moat surrounding the Step pyramid Complex at Saqqara. Nabil has stated the smaller 100 foot "mounds", at one of the proposed complex sites, are a similar size as the 13th Dynasty Egyptian pyramids, if a square base can be discovered.

Next Steps

The Egyptian sites have been sent to Egyptologists and researchers for further investigation and "ground truthing". Angela has stated, "The images speak for themselves. It's very obvious what the sites may contain but field research is needed to verify they are, in fact, pyramids and evidence should be gathered to determine their origins. It is my hunch there is much more to these sites and with the use of Infrared imagery, we can see the extent of the proposed complexes in greater detail." This is just one site of many Angela has identified that may contain ancient ruins. "My dream is to work with archaeologists to release sites that I have identified over the past ten years of research. This research is the frontier of discovery and it's just beginning to advance views of our ancient past", states Angela.

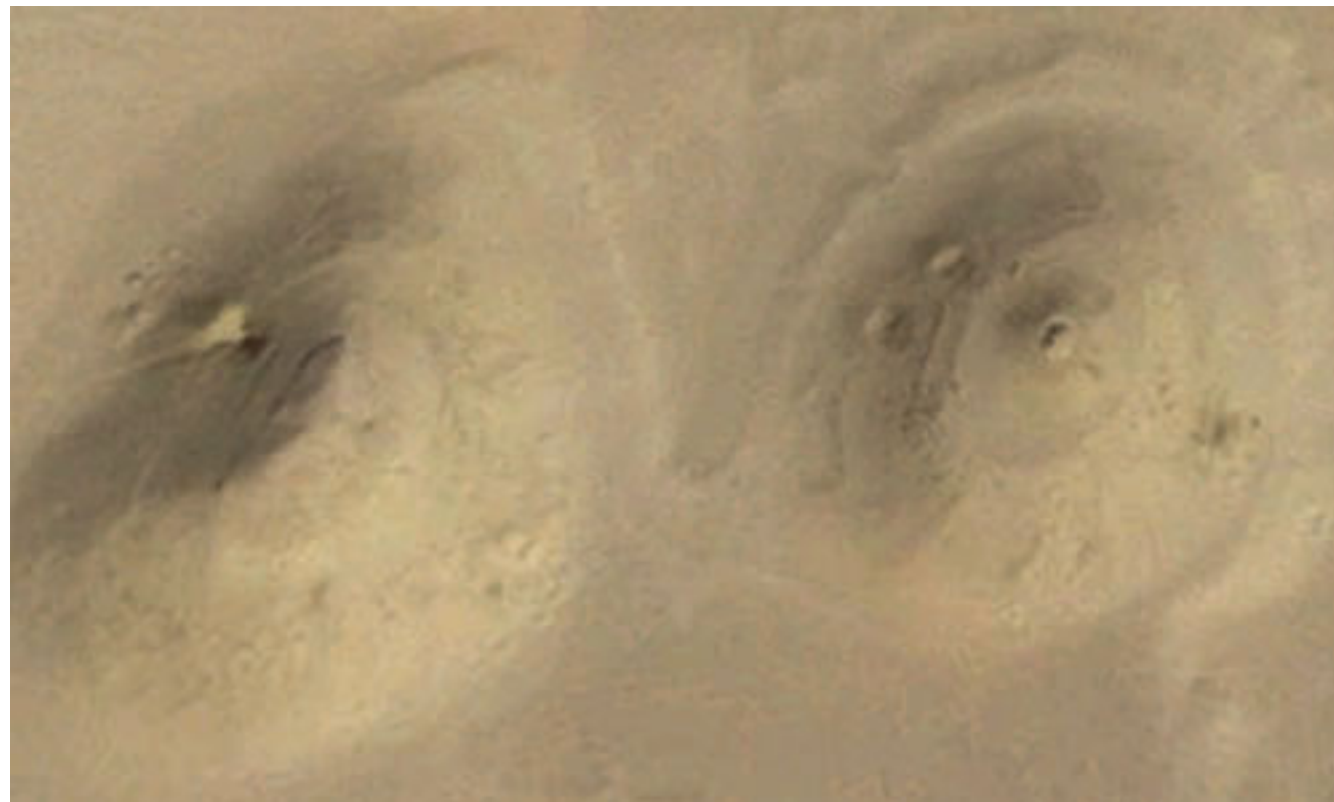
Many of the documented areas will remain undisclosed until proper officials are notified and the sites can be protected. Angela is raising funds for a documentary that will include many of the undiscovered sites that have been identified using Google Earth. Angela is also forming a non-profit organization to promote satellite archaeology and remote sensing. A select, small portion of the sites can be viewed online with Google Earth by visiting Angela's "anomaly collection" at <http://www.googleearthanomalies.com>.

If you'd like more information or would like to participate in the research, please mouse over the resources link above and click contact Angela at GEA.

Pyramid of Sinki in Egypt. Notice the central area of the pyramid is a recession it looks similar to a square with the top being truncated.



Close-up of the two smaller "mound" sites.



Interesting features of the two small mounds:



Recent images of the "mound" site show evidence of someone digging into the "mound".



Peruvian Pyramids that look like regular hills due to erosion:
The pyramids of Tucume, Peru known as “the Valley of the Pyramids”.



Pyramids are heavily eroded.



Rating

1 2 3 4 5

[Previous Page](#) | [Next Page](#)

COMMENTS

The first site is in north of Lake Qarun in a place where I have been several times. It is probably a construction linked to the Dimeis temple (on the right), more "Roman/Greek" than anything Egyptian. Also could have been underwater at Egyptian times...

On last Google sat picture, I can see big piles of sand around; effraid that somebody already digged... There is also a black mark... Not good

posted @ Monday, August 13, 2012 8:05 AM by Dominique Wille

This is such a great discovery!! I can't wait to find out more about it.

posted @ Monday, August 13, 2012 12:35 PM by Shirley

Well, whatever it is, somebody already opened the poor site up in 2011 - cut right through it! *And* somebody started digging a new hole to the north.

posted @ Monday, August 13, 2012 1:15 PM by Tom Morgan

This is wonderful. I will be very interested to see how this turns out. Keep up the good work!

posted @ Monday, August 13, 2012 3:11 PM by David McMath

What an amazing discovery, I look forward to reading and hearing about this significant find. The more we know about the past, the more we can discover about our future!!

posted @ Monday, August 13, 2012 3:13 PM by Amy Campbell

Very well written article...so very interesting. Makes me wonder how many thousands of discoveries have yet to be found. Indiana Jones never had it so good. Go Find It!

posted @ Monday, August 13, 2012 10:03 PM by Jim McWilliams

The first site looks different on a picture from 2012, taken by GeoEye (visible via Google Maps). Piles of sand are visible - this site has been visited recently, if not in the last years since 2008. I wonder what was the result?

posted @ Tuesday, August 14, 2012 5:20 AM by Timo

Good luck trying to get the Egyptian government to do anything remotely 'scientific' now that they've had their 'Arab Spring', aside from of course plotting the destruction of Israel..

posted @ Tuesday, August 14, 2012 8:51 AM by Urgol

I currently live in Cairo -- been to this area many many times. If someone would provide the coordinates, I will provide land pictures of these sites. Some that I have visited before are man made - mud bricked lined storage(?) bins using natural land masses. Interesting to say the least!!

posted @ Tuesday, August 14, 2012 2:03 PM by Tim Clark

Well, whatever it is there is a tremendous amount of detail in the first image. One of the images in the lower left corner clearly has some kind of square structure side-by-side, which in turn does not look nature to me. Looks like a great find to me even if it turns out to be nothing.

posted @ Tuesday, August 14, 2012 3:02 PM by Jay Rock

"It seems that Angela Micol is one of the so-called 'pyridiots' who see pyramids everywhere," said James Harrell, professor emeritus of archaeological geology at the University of Toledo and a leading expert on the archaeological geology of ancient Egypt. "Her Dimai and Abu Sidhum 'pyramids' are examples of natural rock formations that might be mistaken for archaeological features provided one is unburdened by any knowledge of archaeology or geology. In other words, her pyramids are just wishful thinking by an ignorant observer with an overactive imagination."

Even if Old Man Harrell is "correct" there's no reason to be insulting about it.

posted @ Tuesday, August 14, 2012 4:03 PM by WhoWould

I just read the story on Fox News.

Very interesting blog you have here...

I agree with the other comment. Harrell made himself look like a know-it-all, pompous ass.
[posted @ Tuesday, August 14, 2012 5:03 PM by LJM](#)

I want to congratulate you on your discoveries but I caution you that the very large triangular smooth shape appears to be in a crash type crater?

The only thing on earth resembling it is located on USAF //NASA x15 exp. plane film when the plane was near space above earth...objects were seen going by shaped like the smooth 3 pointed object...i wish you the best...

derr= google derr ufo for more info on my own work....my regrets if you find this letter offensive about the work you did ...

[posted @ Tuesday, August 14, 2012 6:42 PM by DERRUFO](#)

That so exiting !!! I impress that we can found pyramide at this time. I want to know more about this storie !!

[posted @ Tuesday, August 14, 2012 7:03 PM by chambre hote toulouse](#)

They say they are just buttes. However, take the three little ones and overlay them with a star map of Orion's sword and they are almost perfectly aligned. Some might be buttes but these three are rather compelling.

[posted @ Tuesday, August 14, 2012 7:10 PM by John Belencroft](#)

If this is true, along with the fact that Islamic clerics have called on Egypt to destroy the Great Pyramids, my suggestions would be to keep the data to yourself until sanity returns to Egypt.

[posted @ Tuesday, August 14, 2012 9:56 PM by Eric](#)

Amazing, happy to help, as you say, get the sites officially secured first. do these sites line up with the meridians as the other pyramids are "supposed to" ??

[posted @ Tuesday, August 14, 2012 11:44 PM by james](#)

Google Earth is exciting. When I have been Satallite researching the Pyrimid areas, I have been searching for ancient canal system to the larger Pyrimids. I have a theory on how the structures were constructed. What I need to find near them is a large area able to contain water as a lake. Any "discoveries you or others have found would be helpful. Thanks

[posted @ Wednesday, August 15, 2012 6:10 AM by Mark Cushman](#)

I myself, have used tons of time and money to become a Master of Science. It seem to me, that - unfortunately - many "Specialists" and "Scientists" with years of work behind them (and maybe books) feel very anxious about any "non educated person" to - in this case - find something THEY should have been finding. "Oh shit, with all my education, and all money spent, WHY ON EARTH did'nt I get the idea to use Google Earth...". So, only thing to do, is try to miscredit the sinner.

Maybe the doctor have been writing several books that suddently becomes "rubbish", just because some "non educated person" shows with luck, that the things are different from what the books says. There's money on the stake here....!

Maybe the "pyramids" are "nothing"! Maybe they are..... pyramids! But until we have a proof for anything, everyone must speak to each other with respect - educated or not!

[posted @ Thursday, August 16, 2012 2:26 AM by Kent Carlson](#)

I'm kinda going with the square shape theroy. A Foundation of any pyramid, is now , & has always been a square.

At the moment, Mars takes a back seat..

[posted @ Thursday, August 16, 2012 6:07 AM by Rotten Ronald](#)

The image of the structure with what looks like a fissure cutting through it, appears to me to have a ramp or similar construct leading up its southwest face.

[posted @ Saturday, August 25, 2012 8:24 AM by Mason](#)

I noticed when I was looking at the same area on Bing maps, that a road appears to run right past the largest of the sturtures in the cluster. It travels northeast toward the vicinity of Cairo. It appears to cut through landforms or vice versa. If the path is followed southwest it passes a coffin-shaped area that looks interesting.

[posted @ Saturday, August 25, 2012 8:35 AM by Mason](#)

I am amazed that we are still discovering planet earth, excellent work.

[posted @ Tuesday, August 28, 2012 6:12 AM by brian1398](#)

The layout and orientation of the pyramid complex (if it is indeed that) appears to be similar to that of Teotihuacan. If that is a staircase or ramp running up the southwest face of the pyramid, it is the equivalent of the Pyramid of the Moon in terms of layout. I had

difficulty getting an accurate angle, but it is within a few degrees of the 15.5 degrees off north seen at Teotihuacan. Not sure what to make of the smaller structures in the complex, but they seem to line up with the larger pyramid.

I failed to mention that the road I spoke of in my earlier posts does not appear on the Bing maps aerial image layer, just on the bird's eye view layer.

posted @ Sunday, October 07, 2012 8:58 PM by Mason

You must be logged in to post a comment. You can login [here](#)